

MAJOR METROPOLITAN MOBILITY INFRASTRUCTURE PROJECTS



CLUJ-NAPOCA CITY HALL

Cluj Metropolitan Ring

- Length: 42 km express road
50 km connection roads
- 20 nodes for Metropolitan accesability
- Cost of investment: EUR 1,4 BIO
- Cluj city connection to A3 - Transylvania Highway E60
- Feasibility Study approved at Gouvernment level
- Status: Auction for Design & Built phase open

Modern public transport

- Acquisition of new trams & trolleybuses & buses
- 10 trams; cost of investment EUR 10 MIO
- 30 trolleybuses; cost of investment EUR 15 MIO
- 30 electric-buses; cost of investment EUR 15 MIO
- City Strategy - 100% Electric Urban Transport untill 2030
- Walkable City Investment Programme EUR 100 MIO

Cluj Metropolitan Subway - Light Metro

- Lenght: 21,03 km
- 19 subway stations plus 1 trains depot
- transportation capacity: about 17,000 passengers per hour / 90 seconds interval
- implementation period - 8 years (2031)
- Cost of Investment: EUR 1.8 BIO
- Status - 1st phase - design & build - in implementation (9 stations)
- Increase green mobility inside the Cluj Metropolitan Area

Expressway A3 - DN1 /E60 - Tureni

- Length: 5 km plus 5 km connection roads
- Cost of investment: EUR 115 MIO
- Optimum impact for Turda city - bypass by A3 highway
- Optimum connectivity and accessibility in Cluj Metropolitan Area
- Status: in implementation (Dec 2024)



CLUJ-NAPOCA
CITY HALL



TRANSYLVANIA CULTURAL CENTER

Project information:

- Multifunctional Cultural Center
 - Philharmonic Concert Hall
 - Music Academy Facilities
 - European Center for Contemporary Art - ECCA
- Events halls, exhibition facilities, cafeteria
- Land surface: 13,900.00 sq.m
- Located near city center on a main boulevard
- Concert Hall capacity of 1610 seats
- Status: 1st phase in progress

CLUJ SCIENCE AND RESEARCH CENTER

Project information:

- Science Museum
- University Research Center
- Events halls, exhibition facilities, workshop area
- Ownership: public
- Land surface: 25.000 sqm
- Located in Cluj Innovation Park
- Project Status: Concept and master plan phase in progress - International Solution Competition



EDUCATIONAL & HEALTH CAMPUS BORHANCI



Project information:

- An innovative project that combines educational functions, sports and health facilities and generous green park and leisure areas available to the community.
- Total project area: 71 ha
- Nursery - 100 kids / Kindergarten - 160 kids / 8 groups
- Elementary school and High School - about 650 students
- Park and green areas - about 60 ha
- Sport Centre - indoor & outdoor facilities
- Indoor swimming pool
- New streets, pedestrian areas and bicycle tracks
- Status: In implementation - Phase 1



With its two business centers – CREIC and TEAM, Cluj Innovation Park is a creative community where innovation, education and growth meet. We build bridges between startups, creatives, freelancers and corporations, and bring them together, by offering ways to learn from each other. By becoming part of Cluj Innovation Park community, you get access to the best spaces, tools, facilities, knowledge and social environment to grow your business in the best way. Furthermore, we are positioned to address the needs of local and international investors

CREIC is a business center dedicated to the creative and cultural industries. Unique owing to the diversity of services and facilities, but also owing to the design of the whole structure, the center is, in fact, a community promoting networking, business partnerships and collaborations between creatives, freelancers, startups, clusters and mature corporations.

TEAM has got all the infrastructure needed to support the business environment in the fields of production and industry: office spaces, meeting rooms, event spaces, halls for production and parcels of land. We partner with investors who value our high standards of transparency, innovation and compliance – essential to meet investment objectives and deliver returns.



IN A NUTSHELL

- 2 business centers | CREIC Center & TEAM Center
- Class A private offices & coworking spaces
- Film & Advertising studios
- Production halls & Parcels of land
- 3 inspiring labs
- Indoor & outdoor event spaces
- Bistro for social & business meetings
- Meeting & networking spaces
- Rooftop terraces & Green amphitheatre
- Member & guest parking (outdoor/underground)





CREIC LABS

Machine Learning & Automation Lab
CGI&VXF Lab
Design Development Lab

// created through the Urban Innovative Actions initiative – Cluj Future of Work Project (5.6 mil. Euros)
// the first product design, testing and prototyping lab in Eastern Europe
// the largest 3D printers in Romania

EVENTS & FILM STUDIO

At Cluj Innovation Park we have got the right social environment for people to connect, learn, create and grow. We have got the best spaces for sessions, presentations, screenings, conferences or any other event. Our spaces can host up to 3.000 people in CREIC and TEAM buildings. We also have technical equipment needed, a bistro in CREIC Center and great terraces with stunning views. CREIC Center hosts the only studio in Transylvania (630 sq.m) dedicated to the cinema and television industry.

GREEN ENERGY

Starting with 2023, Cluj Innovation Park has its own photovoltaic park, producing around 1MW, distributed as follows:
// 400 KW – photovoltaic panels installed on a carport type structure

// 390 KW – photovoltaic panels installed on a fixed structure (classic)
// 200 KW – photovoltaic panels installed on a system with auto tracking
// 10 KW – a wind turbine with vertical blades





CLUJ-NAPOCA
CITY HALL



Cluj-Napoca - Sopor a modern & integrated urbanisation strategy

Type of project:	urbanisation plan for a new neighbourhood in Sopor area
Land surface:	250 ha
Land ownership:	private landlords
Project initiative & management:	Local Municipality

Other information:

- Local municipality integrated coordination
- International contest for urbanisation - vision/ concept/ plan
- Infrastructure & Mobility optimum connected to future Cluj Metropolitan Ring and Cluj Subway
- Sustainability solutions
- Project Status: urbanism plan & studies in progress

GREEN CITY DEVELOPMENT



SOMES RIVER WATERFRONT

The river Somes becomes the contact between water, nature and people. On two important sections along the river there will be new green areas and new pedestrian spaces linked together by walking paths and cyclists routes.

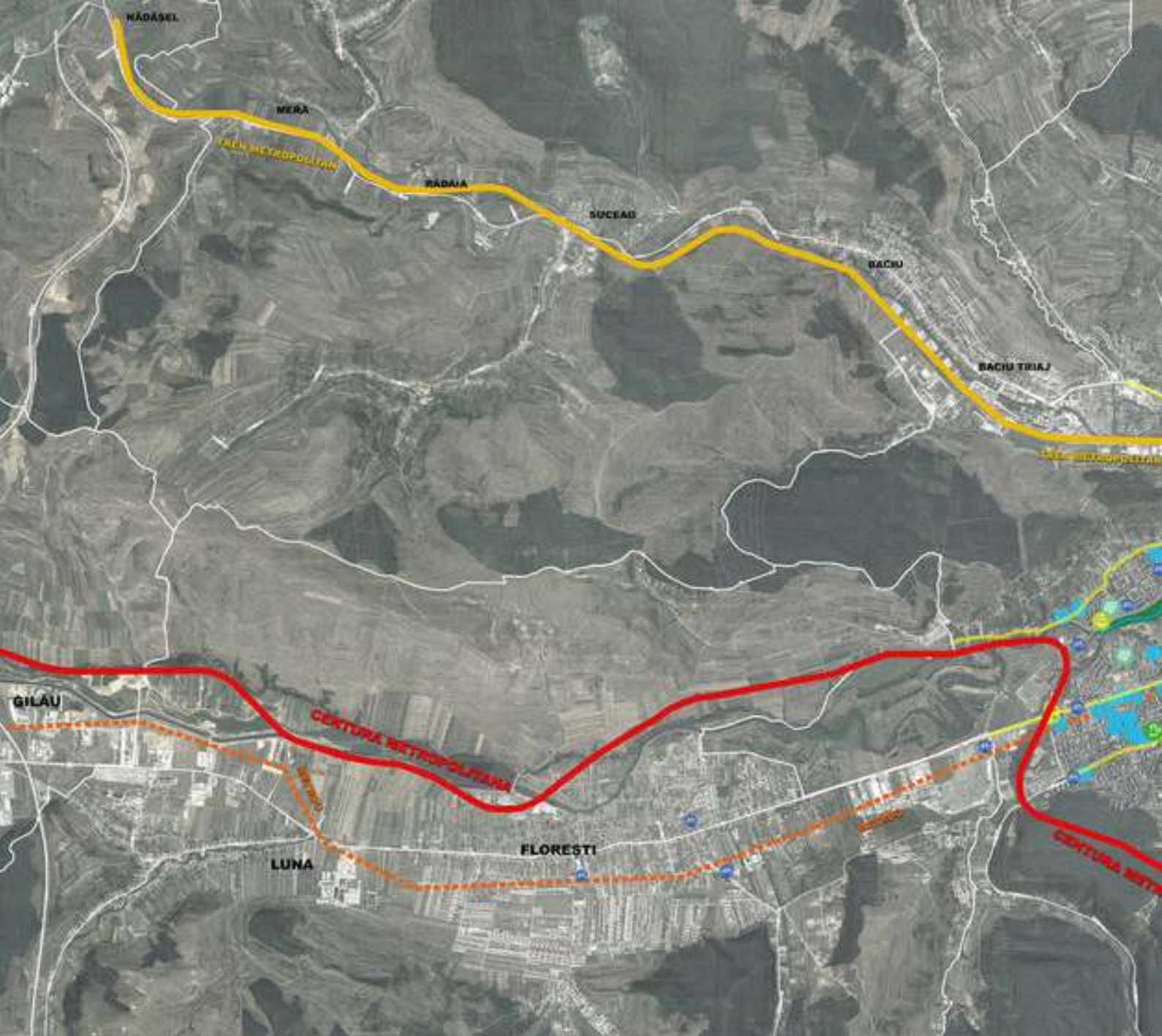
- Project status: first project section in implementation









PUBLIC GREEN AREAS AND PARKS

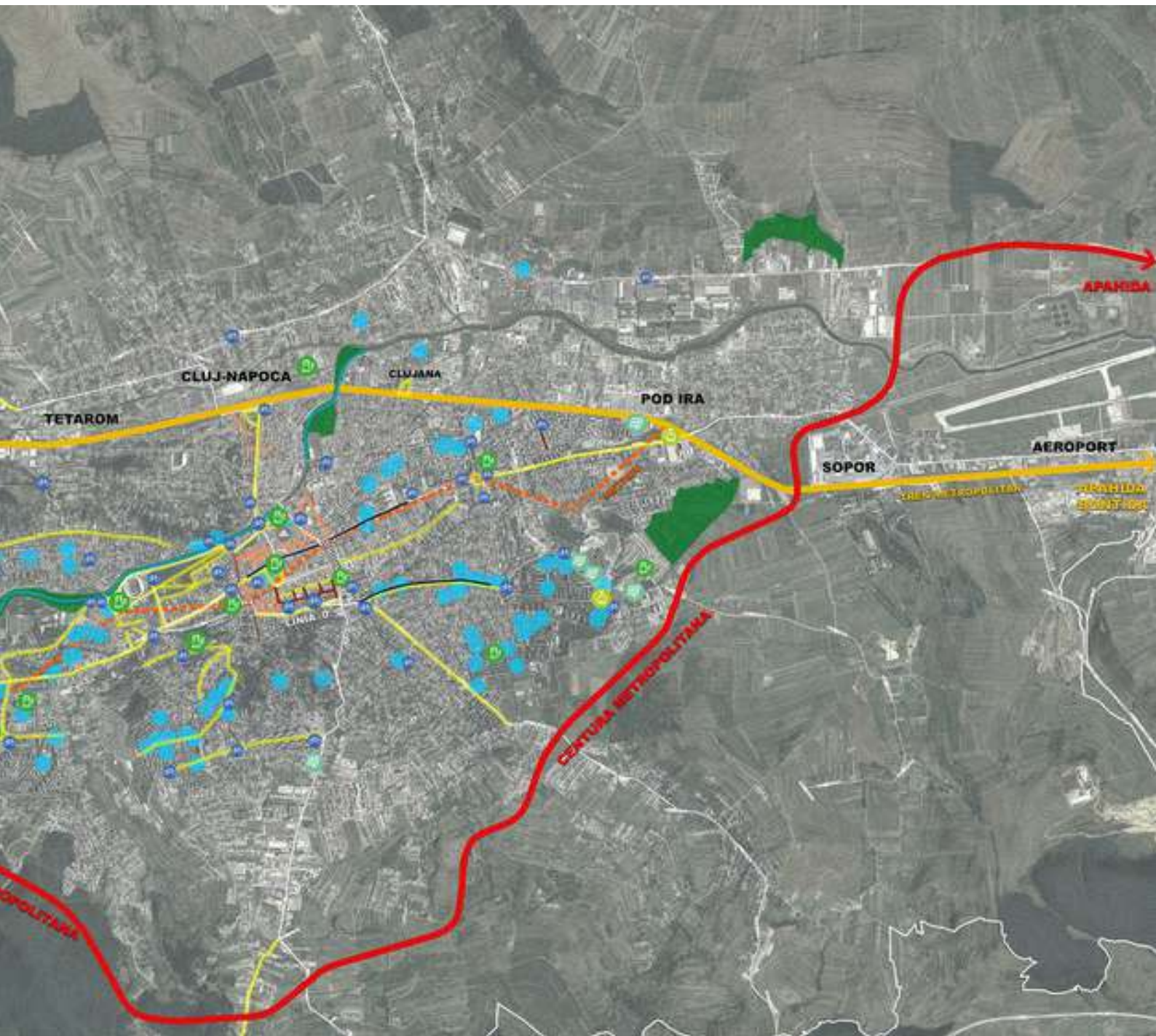
New parks and green areas are in development in several neighborhoods of the city - over 110 ha of new public green spaces.

- ARMATURA Park 3,2 ha
- Tineretului Park 21 ha
- East Park 45 ha
- GHEORGHENI Sport & Leisure Hub
- LA TERENURI Sport & Leisure Hub
- FERVIARILOR Park 5,3 ha
- ZORILOR Park 1,2 ha
- BUNA ZIUA Park 8,5 ha

URBAN SUSTAINABILITY PROJECTS IN THE METROPOLITAN AREA OF CLUJ



-  electric bus charging stations
-  EVs charging stations
-  Energy efficiency rehabilitation of schools, hospitals, collective homes
-  efficient street lighting (LED solutions already implemented)
-  street lighting being modernized (LED)
-  Rethinking Somes river
-  revitalization and development of public green spaces
-  walk-able city



- pedestrian areas enlargement
- dedicated lanes to public transport
- 🚲 Cluj Bike Sharing points
- ☀️ photovoltaic energy solutions for public buildings - Norway Grants
- ▣▣▣ Line ZERO - park & ride electric bus
- Cluj Metropolitan Ring
- Cluj Metropolitan Train
- Cluj Metro



Transylvania Evolution is a private initiative dedicated to economic and social growth by developing solid business partnerships, offering tailored solutions to local and foreign investors, in synergy with local authorities. We are accelerating the long-term coherent consolidation and development of the Cluj Metropolitan Area and the Transylvania region.

Cluj-Napoca - Klausenburg - Kolozsvár - “The Heart of Transylvania Region”, is a dynamic and cosmopolitan city, an important business destination in Southeast Europe, with a remarkable potential for investment, but also a major center of education and culture.

420,000 INHABITANTS

80.000 + STUDENTS

10 UNIVERSITIES

2,5 MIO CATCHMENT AREA / 2H DRIVE

9 CAPITALS AT 12 H DRIVE DISTANCE

50 CITIES DIRECT INTERNATIONAL FLIGHTS

BEST DIGITAL INFRASTRUCTURE

**NO.1 IN
ROMANIA**

ATTRACTING NEW INHABITANTS
RETENTION OF STUDENTS
HIGH SKILLED EMPLOYMENT
AVERAGE LANGUAGES SPOKEN BY
POPULATION
QUALITY OF LIFE



CLUJ-NAPOCA
1 years of partnership
for development
in EUROPE